

LINK Stylus Software LS-500

Installing: On your Windows 95/98/NT machine, click on the **Start** button and select **Run** from the menu. In the textbox, type A:\SETUP and then press the **Enter** key. Follow the Setup program prompts. After a successful installation, the LINK Stylus icon will appear in the **Start-Programs** menu.


Running: Select the LINK Stylus item from the **Start-Program** menu. It will now appear on your taskbar. Click the LINK Stylus icon in the taskbar whenever you need to use it. The first use will present the LS-500 Help Screen that displays the basic operations. If you use the LINK Stylus often, then you may want to place a shortcut to it into the **Start-Programs-StartUp** folder. This will place the LINK Stylus icon on the taskbar whenever the PC starts. *To bypass the Help Screen display on first use, add /HELPOFF to the program/shortcut's command line options.*



Operating: The LINK Stylus is a powerful aid that allows you to create even more effective presentations by adding additional clarity and illumination to your communications, presentations, training, and classroom teaching.

See the **LINK Stylus Quick Reference Sheet** for a complete list of features and how to use them.

In general, you use your PC's mouse/trackball/etc. to add LINK Stylus presentation markups to your image. The left clicker is used to select and draw while the right clicker is used for the popup menus and canceling. Almost all features have keyboard equivalents for your convenience.

As long as the LINK Stylus icon is displayed on the taskbar the LS-500 program is running and waiting for your instructions. When you activate it to add presentation marks, the mouse pointer will change to: 

Pressing the **Escape** key will deactivate your LINK Stylus and return you to your other running applications. To reactivate it, just again click the LINK Stylus icon on the taskbar! In certain situations, like installing new software, you may need to remove the LINK Stylus from memory. *To do this, simply press **Control-F10** while the program is running.*

Applied Computer Systems, Inc.
3060 Johnstown-Utica Road
Johnstown, Ohio 43031

Phone: 1-800-237-5465

Fax: 1-740-892-4838

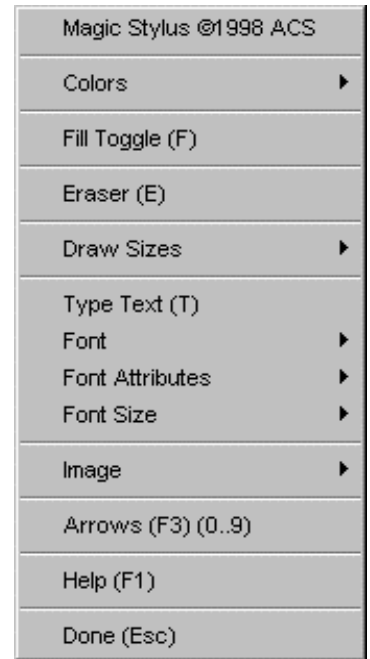
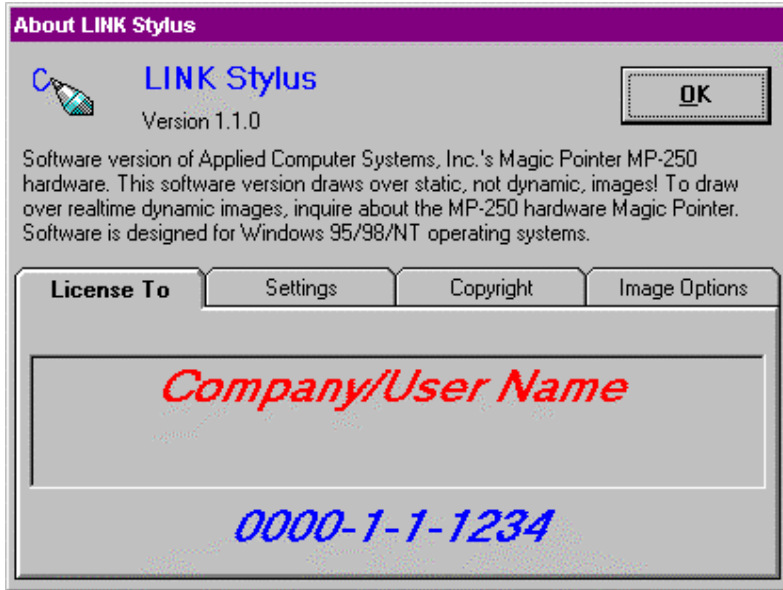
Applied Computer Systems, Inc.'s LINK Stylus Quick Reference Sheet

- Run Program:** Click the LINK Stylus icon in the Windows Taskbar (or in the **Start - Program** menu).
- Popup Menu:** Click the right mouse clicker for the LINK Stylus's popup menu. The menu allows you to select draw color, draw thickness, text mode, font, eraser mode, full clear, dim, hide, help, and done. Checkmarks by items indicate that they are the current settings.
- Freehand:** Move mouse to where you want to start drawing, then press and hold left clicker, move mouse and draw, release clicker to end drawing.
- Horizontal Lines:** Move mouse to left start of line, press and hold one of the **Shift** keys, drag mouse right while also dragging it slightly upward. Release clicker, then **Shift** key when desired line is shown.
- Vertical Lines:** Move mouse to top start of line, press and hold one of the **Shift** keys, drag mouse down while also dragging it slightly left. Release clicker, then **Shift** key when desired line is shown.
- Rectangles:** Move mouse to left upper corner of rectangle, press and hold one of the **Shift** keys, drag mouse right and down. Release clicker, then **Shift** key when desired rectangle is shown.
- Circles:** Move mouse to desired center of circle, press and hold one of the **Control** keys, drag mouse outward from center to determine circle's size. Release the mouse clicker and then the **Control** key when the desired circle size is displayed.
- Ellipses:** Move mouse to desired center of ellipse, press and hold one of the **Alternate** keys, drag mouse outward from center to determine ellipse's horizontal and vertical size. Release the mouse clicker and then the **Alternate** key when the desired ellipse size is displayed.
- Text:** Move mouse to upper left hand corner from which text should start typing, press the **T** key, type text. Move text around on screen by pressing arrow keys for large steps and **Shift**-arrow keys for finer movements. When done, press the **Enter** key.
- Erasing:** Press the **E** key to activate the eraser. Drag mouse over areas to be erased - the original screen image will again become visible. To erase the entire screen (IE. restore original image), simply press the **Enter** key while in draw mode. Press **1** through **9** keys to change size of your eraser.
- Draw Thickness:** Press **1** through **9** keys to set draw thickness/size for drawing, shapes, text, and eraser.
- Colors:** Press keys **R**-red, **O**-orange, **Y**-yellow, **G**-green, **B**-blue, **C**-cyan, **P**-purple, **W**-white, and **Spacebar**-black, for various colors for drawing and text.
- Flashlight:** Press the **F2** function key to activate Flashlight mode. Move mouse to area to illuminate and click left clicker. To exit Flashlight mode, press the **F2** function key again.
- Restore Screen:** Pressing **Enter** from normal draw mode will quickly restore screen to original image.
- Dim Screen:** Pressing the **D** key will dim the screen. A useful feature after this is to use the eraser to restore areas of the screen back to normal - highlights just these areas!
- Hide Screen:** Pressing the **H** key will hide the entire screen with a color box of the current color. A useful feature after this is to erase portions to show just desired areas of the screen or change color and draw/write on the colored box.
- Fill Toggle:** Pressing the **F** keys toggles the fill attribute. When **on**, rectangles, circles, and ellipses are drawn with their centers filled in. When **off**, just the edges of the shapes are drawn.
- Arrow Pointers:** To position/place pointers of various directions/types, press the **F3** function key to activate Arrow Pointer mode. Pressing the keys **0** through **9** will determine arrow shape and direction. Click left mouse clicker to place a permanent arrow: right click to end Arrow Pointer mode.

LINK Stylus Feature List

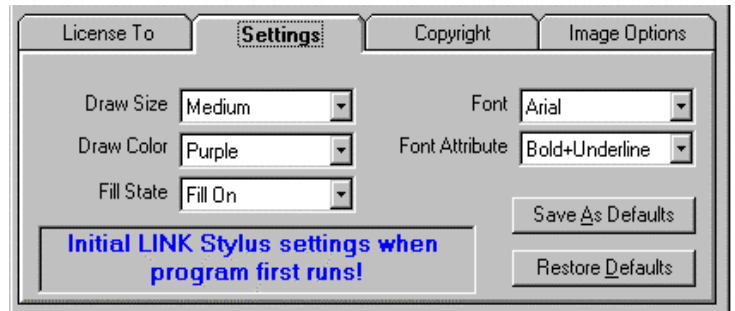
To activate the LINK Stylus popup menu (right), click the mouse's right clicker.

LINK Stylus @1998 ACS: Selecting this item displays the Applied Computer Systems, Inc.'s License, Settings, Copyright, and Image Options dialog.



License To: This tab indicates the company/user who purchased the license and the product's serial number. **You will need to have this serial number available if you call/write for technical support.**

Settings: This tab allows you to set the default draw size, color, fill state, font, and font attributes. The default settings are what is used when the LINK Stylus first runs.



Copyright: Displays Applied Computer Systems, Inc.'s LINK Stylus' legal copyright notice.

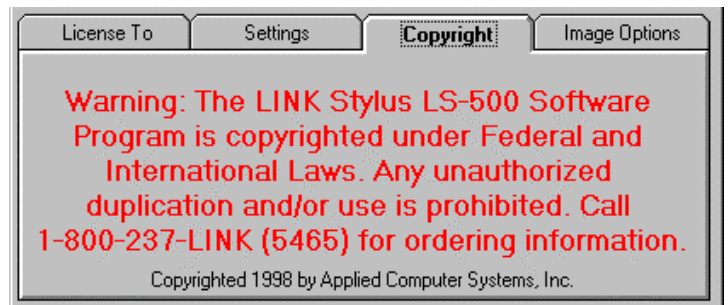
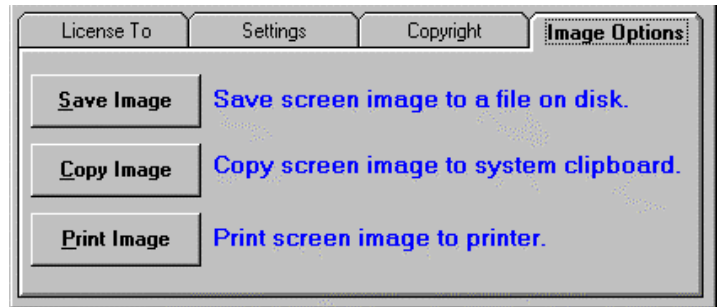


Image Options: Allows user to save current screen image to disk file for later incorporation into their own files (screen is saved as a standard bit-mapped *.BMP file), to capture the screen and place it into the system's clipboard, or to print a hardcopy of the screen to an attached printer.

Save will present you with a standard file selector dialog box. You will need to determine the location and the name for your image.

Print will present you with a standard printer selector dialog box. You will need to select the printer to which to print. This feature prints landscape on 8 1/2" by 11" paper.

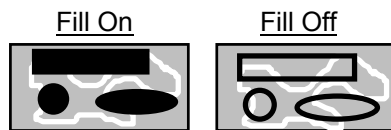
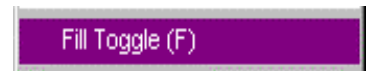


Colors: Displays a menu of available draw colors. Checkmarked color indicates current draw color. From the keyboard, press the keys [R] red, [O] orange, [Y] yellow, [G] green, [B] blue, [C] cyan, [P] purple, [W] white, and [spacebar] black, to set the various draw colors.

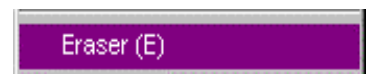


Highlight Mode (F4): (Opaque/Translucent Toggle) Opaque mode renders all drawing objects non see-through: translucent mode renders all drawing objects see-through – like colored glass might.

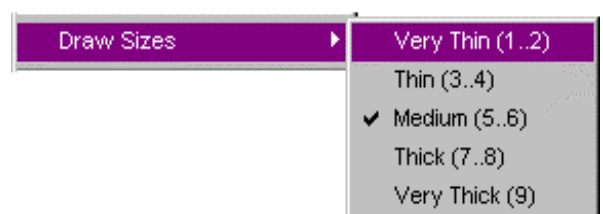
Fill Toggle (F): When checkmarked, rectangles, circles, and ellipses will be drawn with their centers filled with the current draw color. Pressing the [F] key from the keyboard will also toggle this fill state.



Eraser (E): Activates the eraser to erase previous LINK Stylus marks. When the screen is "erased", the original PC's image returns. Eraser size is determined by the draw size. Press [1] through [9] keys to set eraser size. Also, pressing the [Enter] key will erase the entire screen (return it to original PC image). To erase, simply hold the left mouse clicker down and drag the mouse over the areas to erase. To end eraser mode, press a key or click the mouse's right clicker.



Draw Sizes: Selects the drawing size for lines, rectangle, circles, text, eraser, etc. Pressing [1] through [9] from the keyboard will also set the draw size. The larger the number, the thicker the draw pen. The checkmarked item indicates the current draw size.



Type Text (T): Initiates adding text to the screen. To add text, position the mouse to the start location of the text, and then press the [T] key from the keyboard or select Type Text from the menu. Type your text (it will word wrap if necessary) pressing [Enter] when done. To erase your currently typed text, press the [Escape] key. To move text being typed, press the arrow keys (hold [Shift] key down while using arrow keys for finer movements). Set font, font attributes, and font size prior to typing text.

Font: Selects which one of the standard four fonts to use. The checkmarked item indicates the current font selection. If a font is not present on your system, another similar font will be substituted.



Font Attributes: Toggles states of **Bold**, Underline, and *Italics*. Use the standard Windows keystrokes (Control-B, Control-U, and Control-I) from the keyboard to toggle states. Checkmarked item(s) indicate the current states. More than one attribute can be active at the same time.



Font Size: Sets the current font size. Use the keys [1] through [9] to set font size from the keyboard. The checkmarked item indicates the current font size.

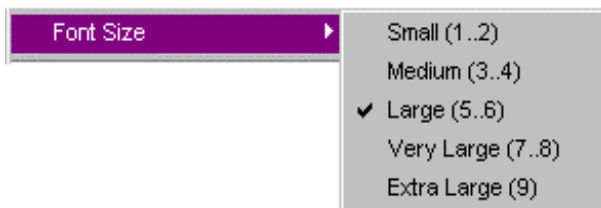
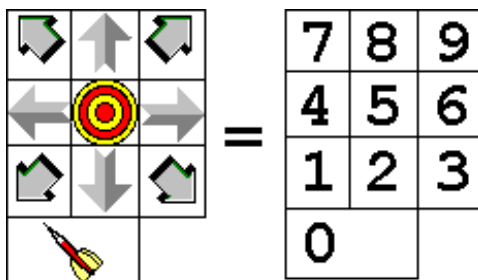
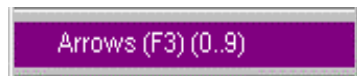


Image: This menu collection contains actions that affect the entire screen. **Restore** erases all LINK Stylus marks and returns the screen to its original image. **Dim** dims the screen to make areas less distracting - use the eraser to restore areas of interest! **Hide** covers the entire screen with the current draw color effectively hiding the entire original screen image - use the eraser to display areas of interest or change the draw color and draw on top of the colored screen.



The **Flashlight** feature takes the entire screen to black with one area being visible - the area in the flashlight's "beam"! To move the beam to light a different area, simply drag the mouse. Press the [1] to [9] keys to set the size of the flashlight's beam. To exit Flashlight Mode, press a key or click the right mouse clicker.


Arrows: Changes the mouse to various directional pointers. To change to a different pointer, press the keys [0] through [9] on the keyboard. Hint: The numbers keys on the numeric keypad are ideal for this, that is [1] is the Southwest pointer, [2] is South, [3] is Southeast, [6] is East, [9] is Northeast, [8] is North, [7] is Northwest, and [4] is West. Also, [5] is the bullseye pointer and [0] is the dart pointer. To exit Arrow Mode, press a key (other than [0] to [9]) or click the right mouse clicker.




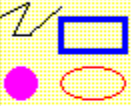
Help: Displays the standard Help Screen. Clicking the **More Help** button gives additional notes on how to use the LINK Stylus features. Clicking the ACS website URL will load your Internet browser (if there is one installed) and take you to ACS, Inc.'s website (if the Internet is accessible).





HELP SCREEN: Applied Computer Systems, Inc.'s LINK Stylus LS-500 ©1998 ACS

 Press the [1] through [9] keys to set the thickness of the lines, shapes, text, and eraser size.

 Press the following keys to change the drawing color: R (red), O (orange), Y (yellow), G (green), B (blue), C (cyan), P (purple), W (white), and Space (black)! Note: Not all colors appear true in some 16/256-color modes.

 Drag mouse to draw. Hold down [Shift] key while dragging to draw rectangles and horizontal/vertical lines, hold [Control] key to draw circles, or hold [Alt] key to draw ellipses.

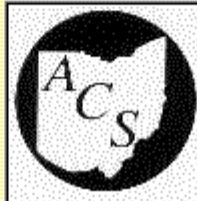
 To type text, press the [T] key or select Type Text from menu. Set color and thickness before typing text. Select desired Font, Font Size, and/or Font Attributes before typing text. During typing, use arrow keys to move text around on screen. Press [Enter] when done.

 To erase your drawn presentation marks, press the [E] key or select the Eraser item from the menu, then drag the mouse to erase marks (restore original image). Note: eraser size is set by the draw thickness; press right clicker, or any keypress, to end Erase Mode.

Right click mouse for LINK Stylus Menu! *Press F1 key for this Help screen!*

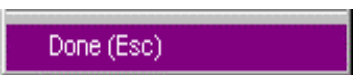
Close Help **More Help** **Copyright**

Applied Computer Systems, Inc.
3060 Johnstown-Utica Road
Johnstown, Ohio 43031
1 (800) 237-LINK (5465)
Fax: 740-892-4838
<http://acs-linksystems.com>



Applied Computer Systems, Inc.

Done: Returns user to normal PC execution. LINK Stylus may be reactivated again by clicking its icon in the taskbar. To completely exit the LINK Stylus program and unload it from memory, press the [Control]-[F10] combination while the program is running.



Hot Key: Pressing the LINK Stylus-500 hot key combination activates the LINK Stylus program as if you clicked on its icon in the taskbar tray. Some applications consume the full screen, or even hide the taskbar, making it sometimes difficult to select icons in the taskbar. This hot key allows you to activate your LINK Stylus regardless of whether the taskbar is visible/accessible or not. The registered hot key for LINK Stylus is:

Control-Alternate-L