

SoftLINK

V11

Instruct & Manage Your Class Anywhere

- **Show Instructor Screen to Any/All Trainee Screens**
- **Blank All Trainee Screens & Gain Their Attention**
- **View All Their Screens Simultaneously**
- **Web Blocks & Restrictions**
- **Quizzes & Testing Package**
- **Remote Power On & Off PCs**
- **Student Help Requests**
- **Interactive Whiteboard**
- **Real-time Audio Monitoring**
- **Resourceful Technician Console**
- **Tutor Assistant App for iPad & Android devices**



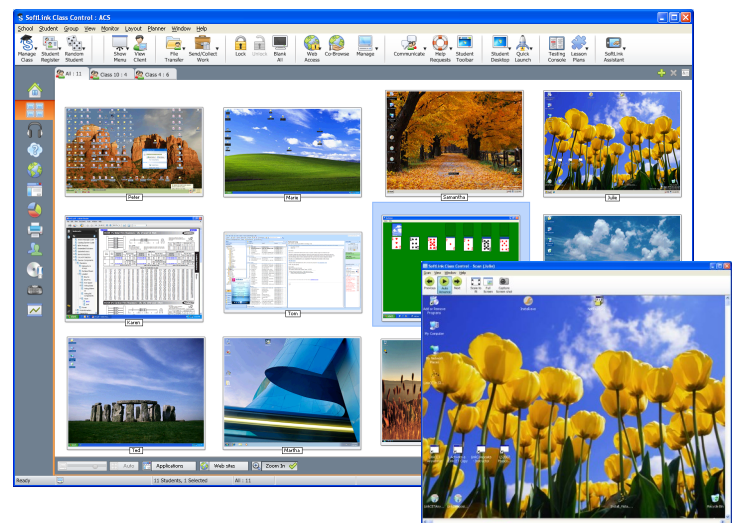
SoftLINK is the ideal software package for trainers who teach in a computer based environment. SoftLINK gives instructors the ability to remotely monitor/control any or all computers in the classroom or throughout the building/campus. SoftLINK provides remote access to the classes' monitors, keyboards, mice, audio, internet, printer, applications and USB drives. SoftLINK encourages classroom collaboration, progressive learning and comprehensive testing. With these intuitive features you will see an improvement in student retention rates, test scores and keeping students on task and focused.

SHOW, INSTRUCT & LISTEN

- Show instructor's screen to any student's computer, a selected group or the whole class. Students can see your presentation on their screen and follow along as you instruct.
- Nominate a student to be the group leader and have certain tutor privileges.
- Listen to any student's audio coming from their headset or microphone, plus you can record and playback their work. This is a great feature especially for language labs or speech classes.
- Remotely access the student's computer using your keyboard and mouse just as if you were sitting next to him.
- Virtual Whiteboard provides you with several drawing utensils so you can easily annotate your screen and display it to your classes' computers.
- Record your lesson and leave the recording on the student's PC for future review.
- Co-browse the internet. As a teacher surfs the internet, the student PCs will automatically follow along.

VIEW, SCAN & SHARE

- View all screens right from your computer, iPad or Android device.
- Scan through sets of student PCs and easily identify who needs assistance or who is distracted by non-related class material.
- Share any student's screen with the class and encourage classroom participation.



SURVEYS, STUDY GUIDE & TESTS

Conduct an Instant Survey and immediately find out if your students understood the material covered or if further instruction is required.

- Instantly see student responses and a class summary.
- Share the results with the class.
- Create groups dynamically based on student response.

Student Journal is a great study guide for your class. All journals are stored as PDF files, allowing instructors and students to easily access their notes at a later time.

- Paste notes, images, websites visited during lesson, chat sessions and screenshots.
- Great resource for test preparation.

NEW STUDENT JOURNAL FEATURES

- Add information to an existing 'master' journal.
- Add chapters and bookmarks.
- Synchronize missing content for absent students.
- Include school branding.

Comprehensive Testing Package allows instructors to create tests using text, pictures, audio and video questions.

- Electronically distribute the tests to students, see their progress, auto-grade tests and preview class results.
- Variety of 8 question styles including text, media, and pictures.
- Discreetly display a student's test grade to their desktop.



INTERNET & MESSENGER CONTROL

Keep students on task and not distracted by non-related websites, instant messages or non-related applications.

- Monitor all students internet use.
- Set website blocks or block internet access completely.
- Allow access to approved websites only.
- View all websites running in the background on PCs.
- Open and close websites on all PCs in a single action.

Monitor Messenger Activity

- Real-time monitoring and control of Messenger applications provides teachers with a view of chat activity and content.

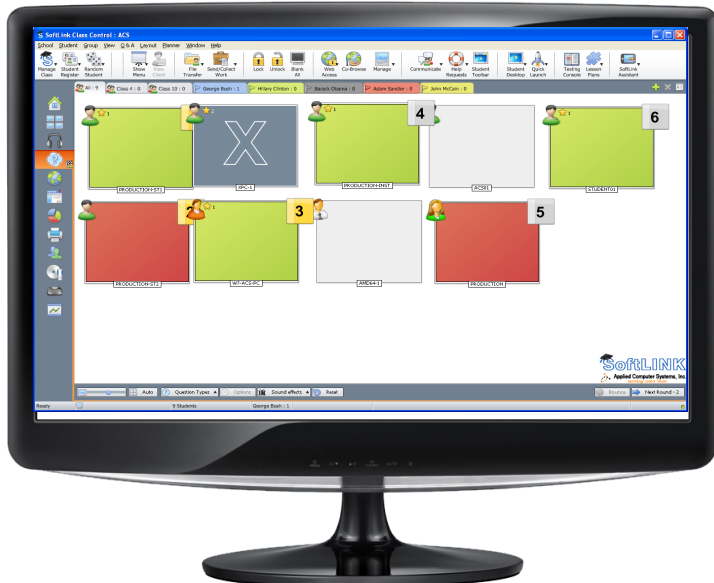
NEW TUTOR ASSISTANT APP

The app is compatible with iPad & Android devices and available as a free download from Apple Store & Google Play. The Tutor Assistant app increases a teacher's mobility around the classroom, enabling them to retain key control and monitoring of all student PCs from anywhere in the class. (SoftLINK V11 desktop Tutor component also required.)

NEW QUESTION & ANSWER MODULE

Always improving upon our testing package we have added this new Q & A module which an instructor can ask a question verbally to gauge the students understanding with a variety of questioning styles.

- **First to Answer** — Teacher can choose a selected # of fastest responders and the quickest student is asked for their answer. Teacher confirms if the student answered correctly or incorrectly and has the option to bounce the question to subsequent students. Teacher can elect to award or deduct points
- **Pot Luck and Team Mode** — Students can be selected at random to answer a question and team play can be introduced.



MANAGEMENT & SECURITY

No longer walk around the classroom shutting down each and every PC. SoftLINK allows instructors to do this right from their PC. Save a great deal of time!

Save Printer Resources and Secure your devices.

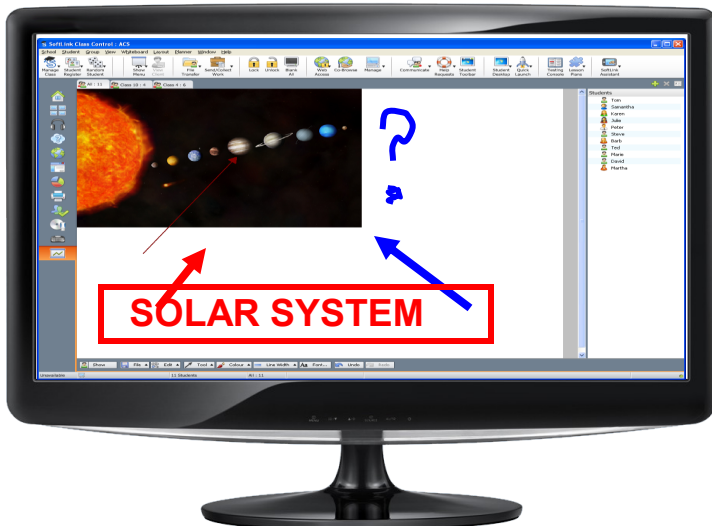
- Control who prints to the printer and how many pages are printed daily.
- Save ink, paper and money by setting perimeters for the printers.
- Control the access and use of portable media devices within the classroom.
- Automatically re-apply restrictions on reboot of a student PC.
- Unique 'security key' to make your copy incompatible with other copies.
- Restrict connectivity to only systems carrying a matching software license.



TECH CONSOLE

In addition to our extensive suite of teaching tools SoftLINK also includes all the necessary tools to ensure all computers are managed and maintained so they are up & running. The tech console is a great tool for lab technicians, network manager and the IT department.

- View all computers across the school network.
- Remotely power on and off PCs.
- Remotely log-in and reboot PCs.
- Provide direct technical support to any instructor.
- Run a query to determine software inventory on each PC.
- Create a hardware inventory for a specified PC.
- Distribute files and folders to designated PCs.
- Group computers by class/physical location.
- Online tech support chats with teachers needing help.
- Broadcast messages to groups or all users in seconds.



VIRTUAL WHITEBOARD & ANNOTATION

Save the expense of an external whiteboard and utilize SoftLINK's virtual whiteboard. Plus bring your presentation to life with our on-screen annotation tool.

- **Virtual Whiteboard** — Full page whiteboard integration within SoftLINK with a wealth of drawing tools at the instructor's fingertips—great for teachers who currently don't have a whiteboard in their classroom.
- **Screen Highlighter & Annotation** — Emphasize areas of interest with our highlighter tools. A large assortment of annotation tools provided these include line tools, arrows, shapes, text highlighters and more.

NEW TECH CONSOLE FEATURES

- Ability to search for students by name, device or class.
- Automatically connect to students/teacher using room mode.
- Apply a school-wide set of internet and application restrictions that are "always on".
- Resize remote machines thumbnails using a convenient 'slider'.
- View/set Power Management, Windows Update and Security settings.
- Launch a local command prompt from the remote system on your PC.
- Edit the registry of a remote system.



SoftLINK Assistant

SoftLINK Assistant provides you with the mobility and freedom to cruise the classroom and remotely access your students' computers right from your Android device, iPad or smartphone.

- View Student Screens
- Blank Student Screens
- Restrict Internet
- Freeze Keyboards/Mice
- Send Messages
- Remote Log-Out PCs



SOFTLINK TRAINING AVAILABLE

Maximize your investment with our SoftLINK training classes. Applied Computer Systems, Inc. (ACS) offers professional training sessions designed for beginners to the advanced user. We provide you with the choice of live 'online' training sessions or, if you prefer a more personalized training session, we can train at your facility. Our training sessions are informative for both the trainer and the information technology department. Our training programs are designed to leave you with a knowledgeable understanding so you can effectively utilize the many aspects of SoftLINK.

LIVE 'ONLINE' TRAINING

- Training session targeted specifically for your training requirements.
- Best suited for intermediate and advanced users.
- Suitable for up to five online attendees
- Training ranging from 1 to 1.5 hours

PERSONALIZED 'INSTRUCTOR-LED' ONSITE TRAINING

- Best suited for new and intermediate users
- In-depth training ranging from install, configure classrooms/students, features, and even tech console
- Training is personalized to meet your training requirements and needs



SOFTLINK SYSTEM REQUIREMENTS

Windows XP (SP2), 2003 (SP2), Vista 2008, Windows 7, Windows 8
35 Mbytes free disk space (90MBytes full install)

SoftLINK operates in Terminal Server, Thin/Zero Client, Virtual Desktop and shared-resource computing environments.

Applied Computer Systems, Inc. (ACS) has been in business since 1971 providing computer classroom management systems. ACS has more than 40 years of experience designing, engineering and selling these solutions to businesses, universities, community colleges, government entities, military and the K-12 sector. ACS provides both software and hardware products for PC classroom management. We are your one-source with all the experience and knowledge for PC classroom management solutions. You will find we are easy to work with and we treat every customer as if they were our first.

Customer Satisfaction and Service are our #1 priority.



Applied Computer Systems, Inc.
technology. control. results

Phone: (800)237-5465
Fax: (740)892-4838
www.acs-linksystems.com